

REPUBLIKA Y'URWANDA
INTARA Y'IBURENGERAZUBA
AKARERE KA RUBAVU
NGWINO UREBE

ISUZUMA RY'IMUGO 2007 GHEBIBI GVA GATATU

UMUYOBOZI W'AKARERE
BARENGAYABO Ramadhan
E-mail:rubavudistrict@minaloc.gov.rw

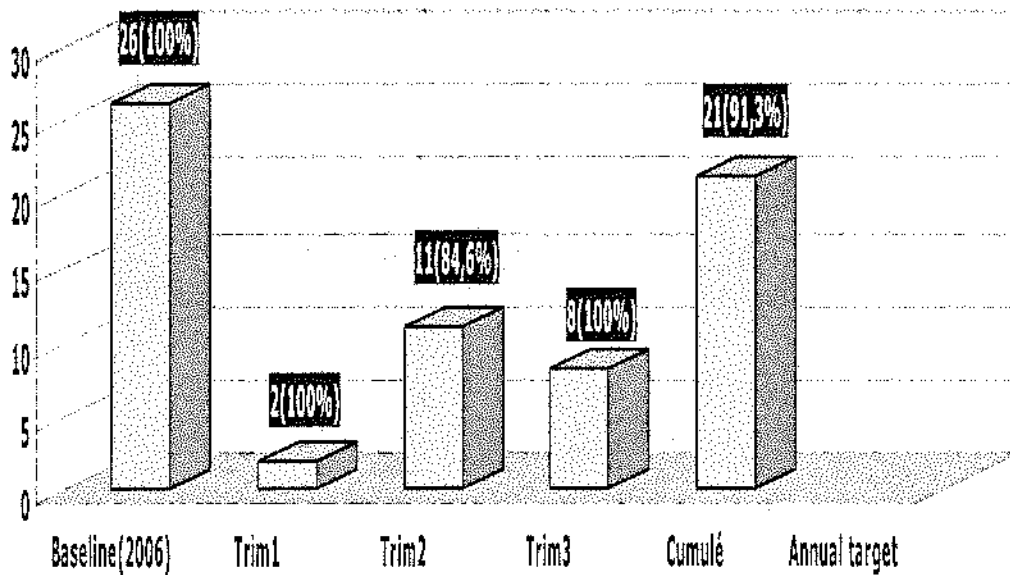
JA KARONGI – KU NTARA

kuwa 15/Ukwakira/2007

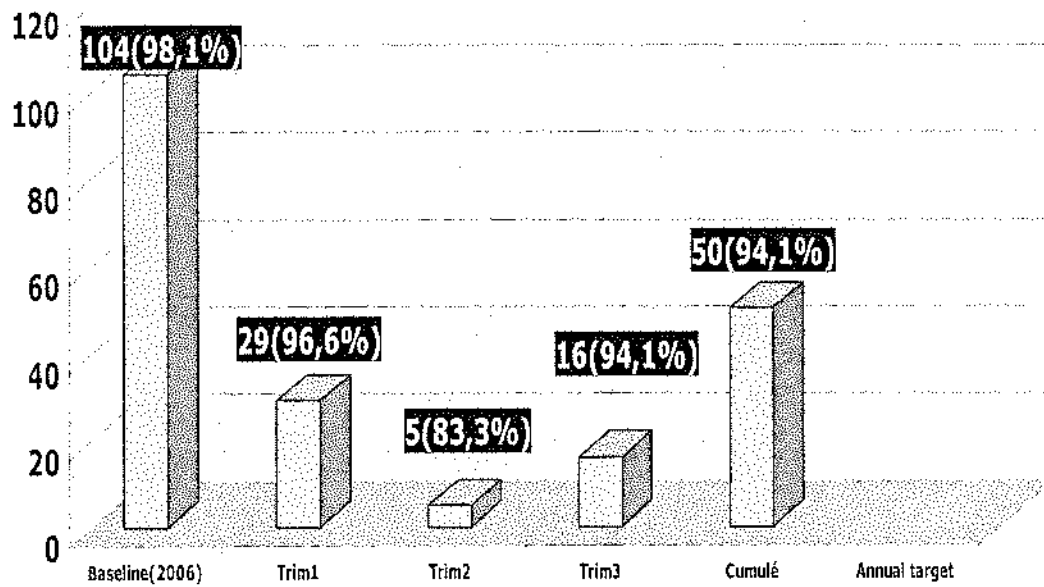
I IMIYOBORERE MYIZA

IMIYOBORERE MYIZA

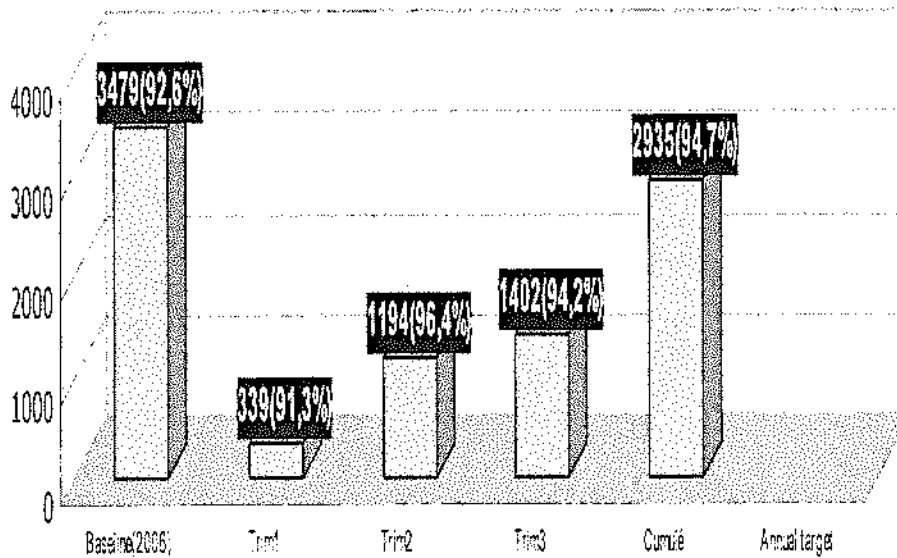
1.GUSHYIRA MU BIKORWA IBYEMEZO BYA NJYANAMA



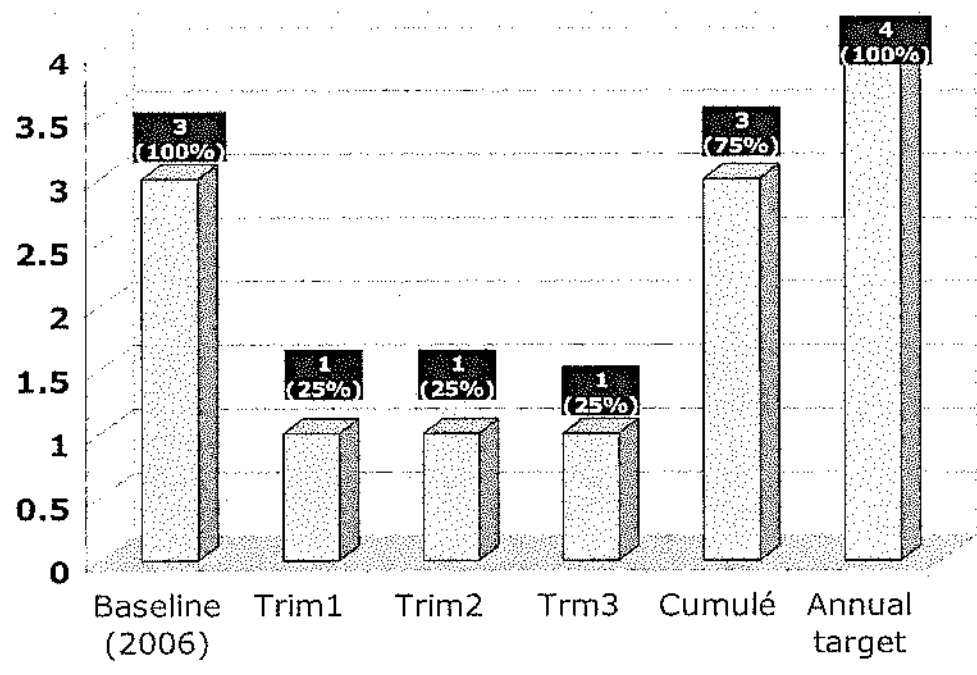
2.GUSHYIRA MU BIKORWA IMYANZURO YA KOMITE NYOBOZ



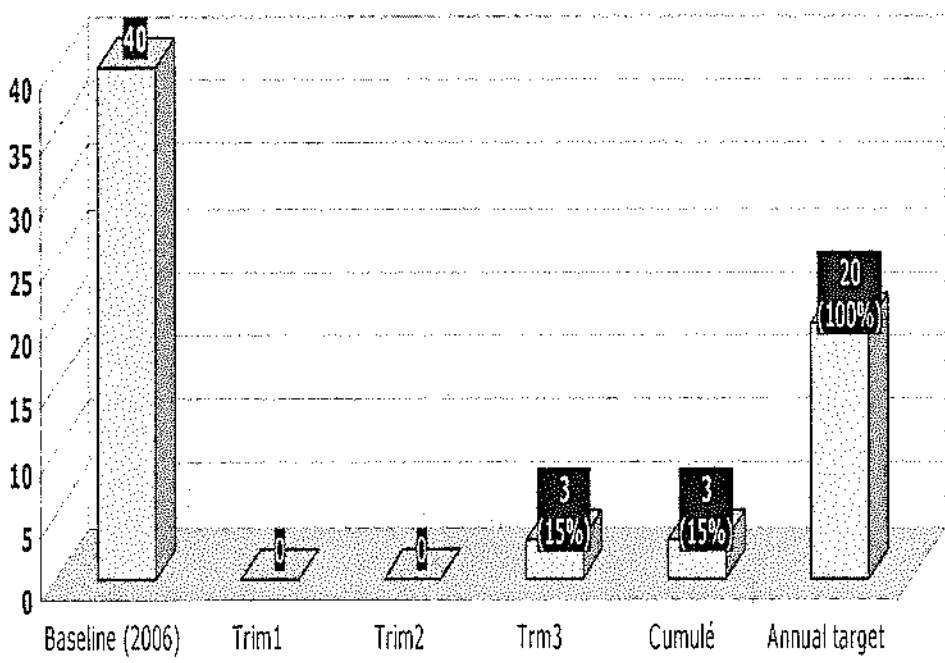
3.KWAKIRA NO GUKEMURA IBIBAZO BY'ABATURAGE



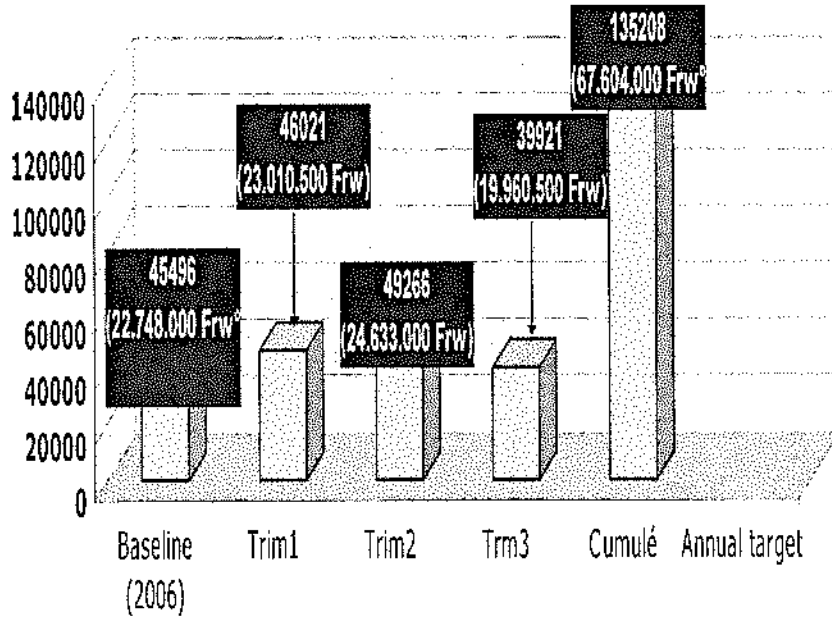
4.GUTEGURA UMUNSI W'IMURIKA BIKORWA



5.KUGURA COMPUTERS 20 ZIGENEWE SERVICE Z'AKARERE N'IMIRENGE



KWITABIRA UMUGANDA



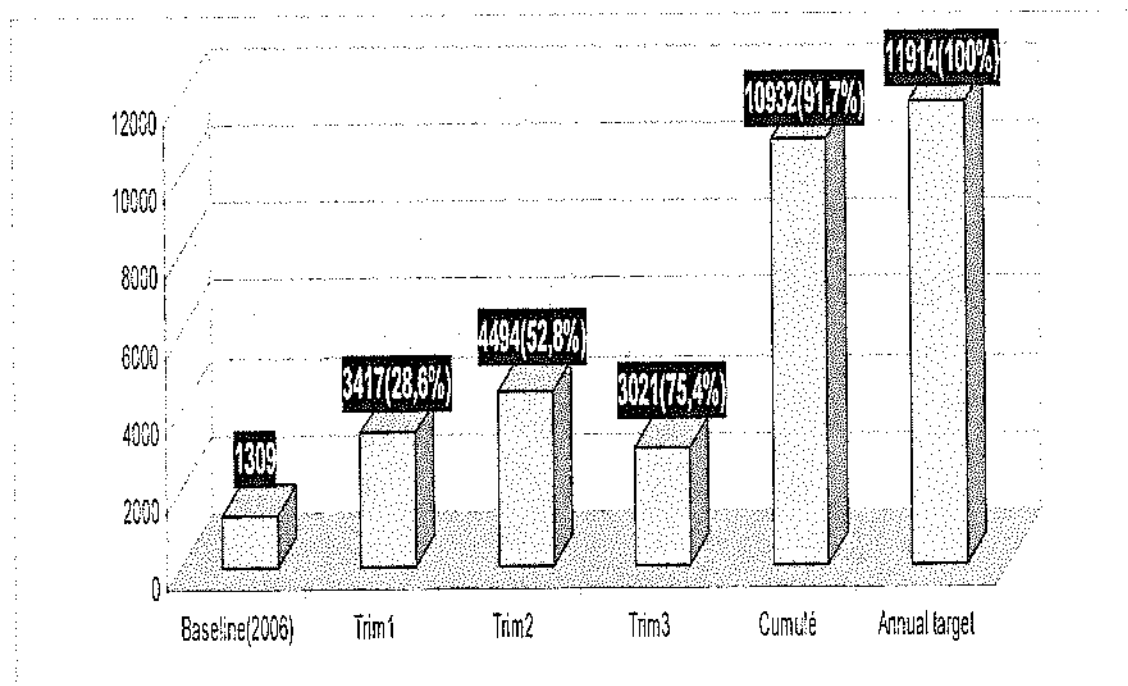
I IMIYOBORERE MYIZA

70%

II UBUTABERA

MU RWEGO RWA GACACA NA TIG

1. KWIHUTISHA IMANZA Z'INKIKO GACACA



2.KUBARURA ABAKATIWE TIG NO GUTANGIZA IMIRIMO YAYO



Itangiriro Baseline (2006)	Ibyagezweho			Cumulé	Annual target
	Trim1	Trim2	Trim3		
Abakatiwe TIG 105 barahuguwe	Abakatiwe TIG 97 barabaruwe	Abakatiwe TIG 202 barabaruwe	Gutegura ahazakore- rwa inga ndo no gusinya amasezera no y'ubufata nye na TIG.	80%	Gutangiza ibikorwa bya TIG mu Karere
	-----	Hateguwe imishinga 2			

KONGERA INGUFU URWEGO RW'ABUNZI

Baseline (2006)	Ibyagezweho			Cumulé	Annual target
	Trim1	Trim2	Trm3		
Urwego rw'abun- zi rwarato we mu tugali tose	Guha ibikore- sho abunzi bose	Gukuriki- rana no kugira inama abunzi	Guhugu- ra abunzi 800 kuri 800	Abunzi 800 kuri 800 barahu- guwe (100%)	Guhugu- ra abunzi bose(10 0%)

UBUTABERA

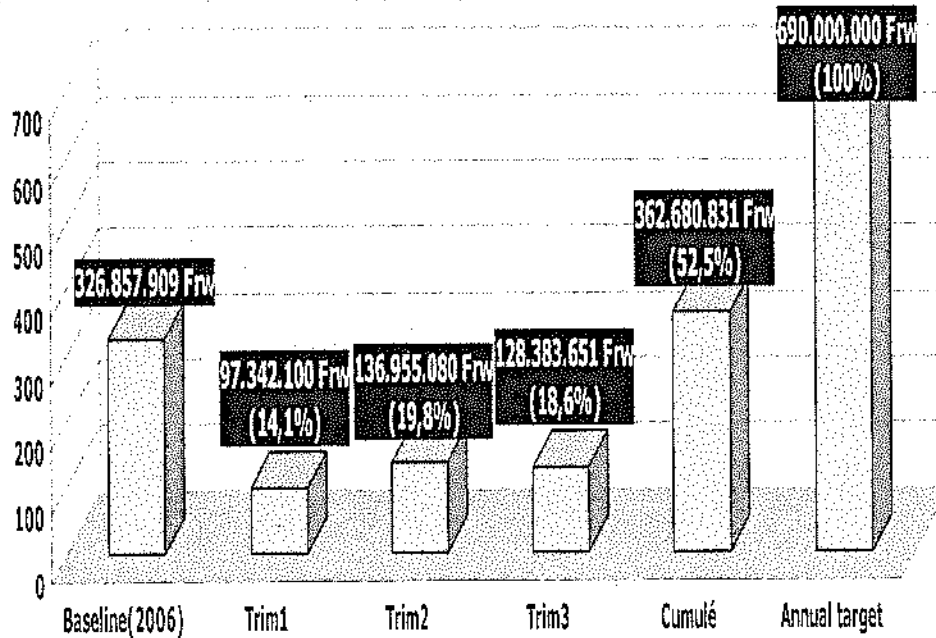
90,5%

~~90,5%~~

III UBUKUNGU

~~90,5%~~

1.KWINJIZA IMISORO N'AMAHORO



2.GUSAKARA ISOKO RYA MAHOKO NO KUBAKA A MA BUTIKI

Itangiriro Baseline (2006)	Iyagezweho			Cumulé	Annual target
	Trim1	Trim2	Trim3		
Risakaye kuri 1/5	Inyigo yarakozwe na DAO irahari	Hatanzwe isoko ryo kubaka amabutiki, NTB ntiratanga za uwatsinze	-----	Hatanzwe isoko ryo kubaka amabutiki, NTB ntiratanga za uwatsinze	Gusakara kuri 4/5 no kubaka amabutiki 51

3.GUSANA INGANDA Z'AMAZI ZA MIZINGO NA YUNGWE-BIKORE

Itangiriro Baseline (2006)	Ibyagezweho			Cumulé	Annual target
	Trim1	Trim2	Trim3		
Inganda 2 zirahari	Hateguwe amasezera no yo gusana no gucunga inganda n'imiyobo ro	Inyigo yo gusana Yungwe- Bikore yarara ngiye	Hakozwe DAO yo gupiganira gukora imirimo	DAO zo gupiga nira gukora imirimo yarara ngiye	Gusana izo nganda 2

4.KUBAKA ISOKO RY'INKA RYA MUDENDE

Itangiriro Baseline (2006)	Ibyagezweho			Cumulé	Annual target
	Trim1	Trim2	Trim3		
Ikibanza kirahari	Amasezera no yo kuryubaka yashyizwe Ho umuko no	Inkingi z'uruzitiro zarazamu we	-----	Inkingi z'uruzitiro zarazamu we	Kubaka isoko 1

5.GUTERA AMASHYAMBA

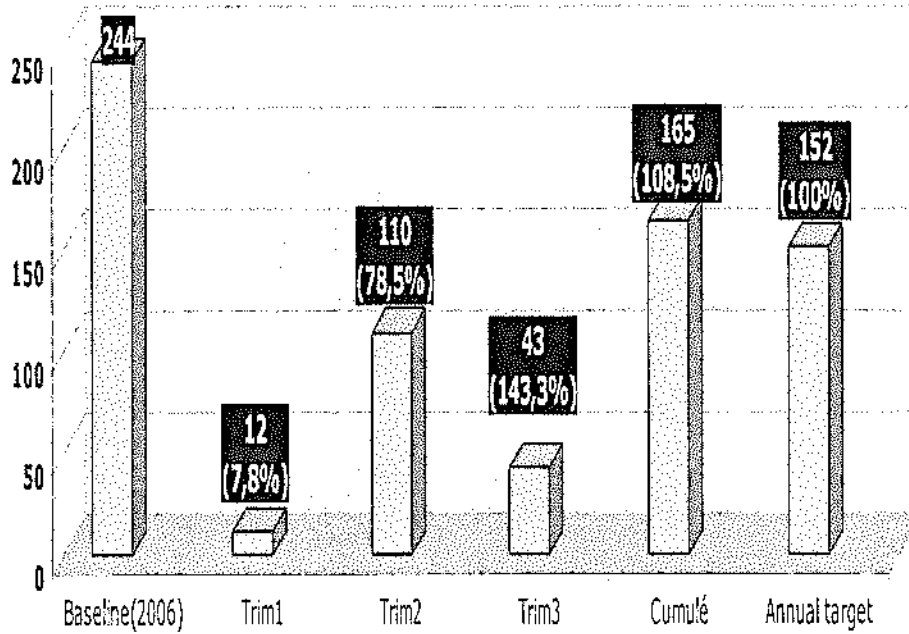


Itangiriro Baseline (2006)	Iyagezweho			Cumulé	Annual target
	Trim1	Trim2	Trim3		
Muhungwe: 0 ha Nengo: 0 ha Rubavu: 0 ha	Ibiti byatangi ye guterwa	150 ha 50 ha 50 ha	0 ha 0 ha 0 ha	150 ha 50 ha 50 ha	150 ha 50 ha 50 ha

6.GUKORERA AMASHYAMBA MATO

Baseline (2006)	Iyagezweho			Cumulé	Annual target
	Trim1	Trim2	Trm3		
0	Ntibirata ngira	Igitabo cy'ipiga nwa cyararangí ye n'itanga Zo ryanyuze mu mvaho	205 Ha Zimaze guko rwa	205 Ha	492 Ha

7. GUTEZA IMBERE IGIHINGWA CY'URUTOKI



8. KUSAZURA KAWA



Itangiriro Baseline (2006)	Iyagezweho			Cumulé	Annual target
	Trim1	Trim2	Trim3		
-----	-----	-----	Ibiti 417000 Byarakore we kuri 60%. Hateguwe pepinieres zirimo ingemwe 230000	Byarako zwe kuri 60% ku biti 417000	Gukora Taille de regenera tion d'entreti en, de reproduc tion ku biti 695.000

9.GAHUNDA YA GIRINKA

Itangiriro Baseline (2006)	Ibyagezweho			Cumulé	Annual target
	Trim1	Trim2	Trim3		
Inka 75	-----	-----	Inka 65	Inka 65	Gukuriki rana gahu nda ya girinka

10.GUKORA IGENAMIGAMBI Y'AKARERE



Itangiriro Baseline (2006)	Ibyagezweho			Cumulé	Annual target
	Trim1	Trim2	Trim3		
PDC y'Uturere twahujwe	Hategu we Ifishi y'ibibazo fatizo	Ikusa nywa n'isese ngura ry'amafi shi 80	Collecte, Analyse, Finalisa tion du document no kurangiza PDD/DDP	Yarako zwe	Gukora Monogra Phie na PDD/DDP y'Akarere

11.KUBUNGABUNGA IBIDUKIKIJE



Itangiriro Baseline (2006)	Ibyagezweho			Cumulé	Annual target
	Trim1	Trim2	Trim3		
Ha 3,5 zirahari	10 nibo batangi ye	Amazu 6 Yara zamuwe, hubatswe ,fonda tion 5, Hasizwa n'ibiba nza 8	Amazu 3 atuwemo, 16 asaka ye,2 ageze Kuri charpente, 4 arimo kuza murwa,ibi banza 3 birimo fondation, 3 birimo gusizwa	Hasaka ye amazu 19	Kubaka inzu 31

UBUKUNGU

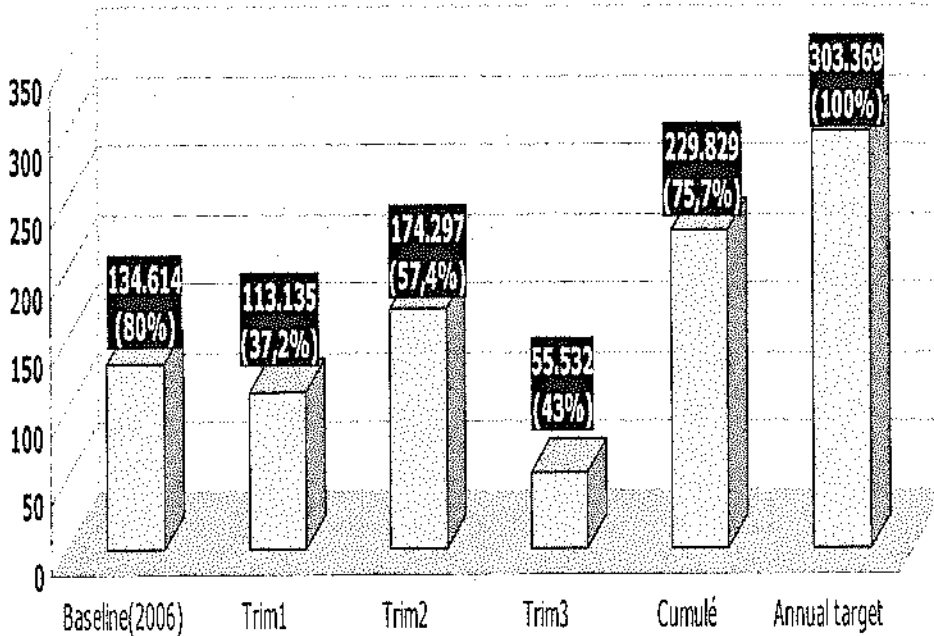
75,7%

IV IMIBEREHO MYIZA Y'ABATURAGE

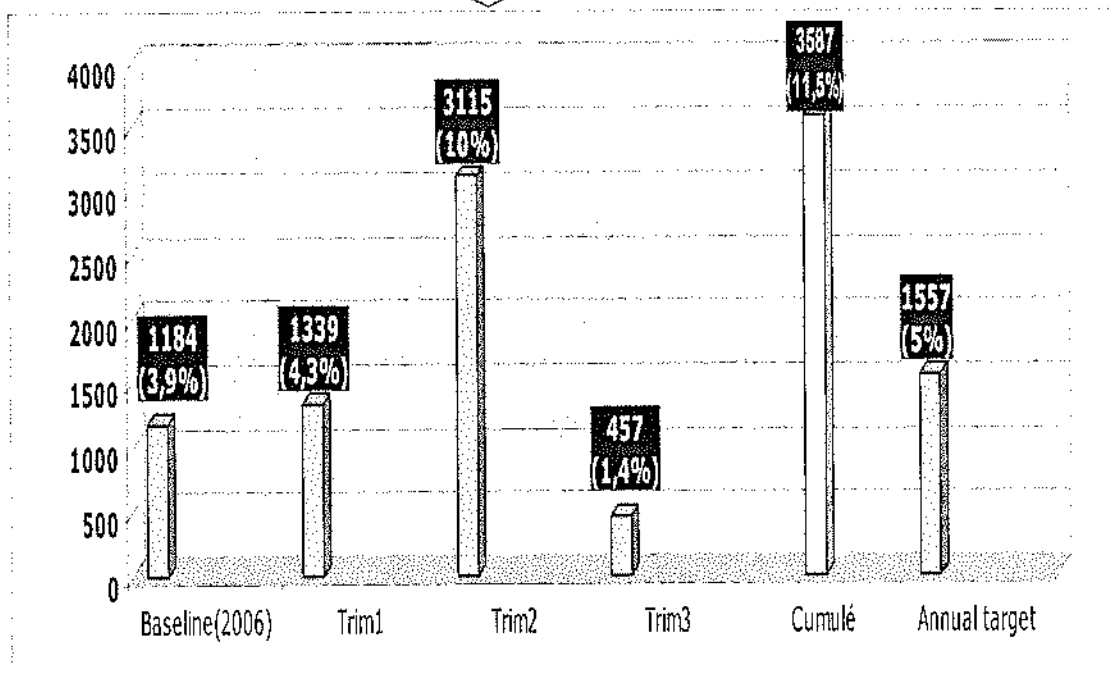
1.KUBAKIRA ABACITSE KU ICUMU N'ABATISHOBOYE

Itangiriro Baseline (2006)	Iyagezweho			Cumulé	Annual target
	Trim1	Trim2	Trim3		
Sites 53 zizubakwa mo Zarategu we	Hamaze kuzamur wa amazu 42 (42%)	Hamaze kuzamur wa amazu 58 (58%)	Gutanga isoko ry'ibikore sho byo gusakara no gukinga.	Amazu 100 Ntarasa karwa (80%)	Kubakira abacitse ku icumu amazu 100
	Hamaze kuzamur wa amazu 81 (23%)	Hamaze kuzamu rwa amazu 92 (26,2%)	Amazu amaze kubakwa ni 124	Amazu amaze kuzamu rwa ni 297 (84.8%)	Kubakira abatisho boye amazu 350

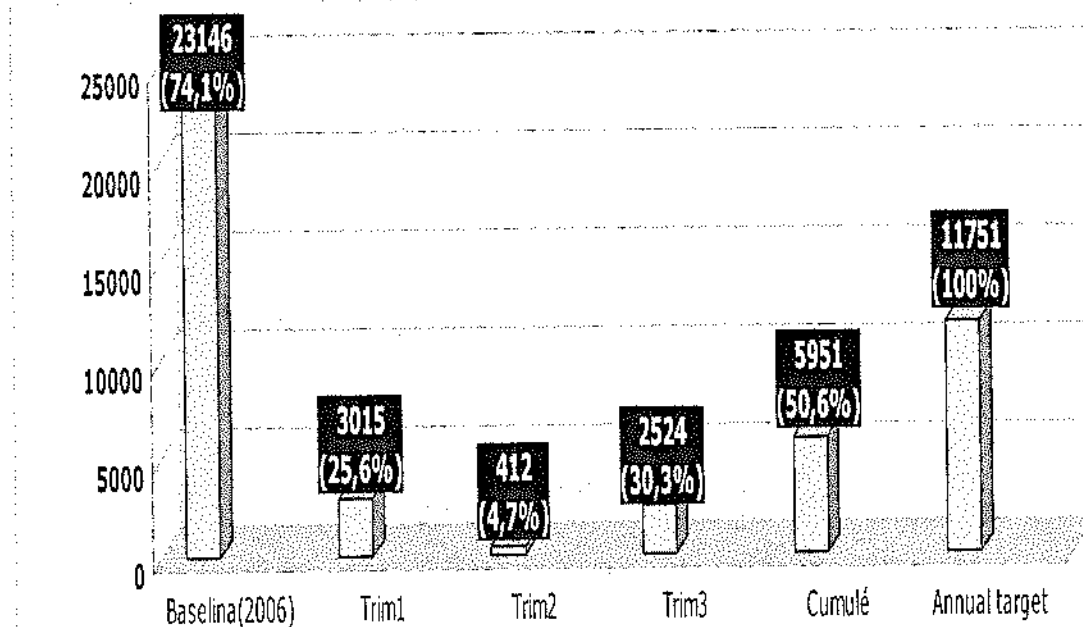
2. KWITABIRA MUTUELLE DE SANTE



3. GAHUNDA Y'UBUZIMA BW'IMYOROROKERE



4. GUSEZERANYA IMIRYANGO IBANA MU BURYO BUTEMWE N'AMATEGEKO



5. GUKANGURIRA ABAGORE KUBYARIRA KWA MUGANGA

Itangiriro Baseline (2006)	Iyagezweho			Cumulé	Annual target
	Trim1	Trim2	Trim3		
Abagore 23% babyari ra kwa muganga	Abagore 3284 kuri 12.631 Babyari ye kwa muganga (26%)	Abagore 4042 kuri 12.631 babyariy e Kwa mu ganga (32%)	Abagore 1680 kuri 8589 babyariye Kwa mu ganga (19,5%)	Abagore 5722 kuri 12.631 babyari ye Kwa mu ganga (45%)	80% y'abagore bazabyari ra kwa muganga

6.AMAHUGURWA Y'ABARIMU BAZAHUGURA ABANDI MU MASHURI Y'INCUKE



Itangiriro Baseline (2006)	Ibyagezweho			Cumulé	Annual target
	Trim1	Trim2	Trim3		
Abarimu 9	Abarimu 5 kuri 24 (20,8%)	Abarimu 4 kuri 19 (21,0%)	Abarimu 9 Kuri 15 (60%)	Abarimu 18 kuri 24 (75%)	Abarimu 24

7.AMARUSHANWA ATANDUKANYE YA SIPORO N'UMUCO

Itangiriro Baseline (2006)	Ibyagezweho			Cumulé	Annual target
	Trim1	Trim2	Trim3		
Dufite ibikombe 2 by'Imi yoborere Myiza, n'ibindi 4	Amarushanwa ku rwego rw'Imirenge mu bigo by'amashuri	Habaye imikino hagati y'Uturere mu bigo by'amashuri abanza n'ayisumbuye	Ibikombe twatsindiye 3 : Handball (EP) Basketball (Filles & Garcons) 2ieme Cycle Sec.	80%	Sport scolaire : 100%

IMIBEREHO MYIZA Y'ABATURAGE

65,1%

65,1%

ISHYIRWA MU BIKORWA RY'IMIHINGO

IGIHEMBWE 3 AKARERE KA RUBAVU

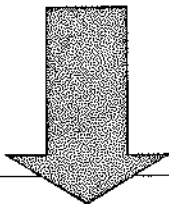
75,3%

75,3%

UKO IMIRENGE IKURIKIRANA MU KWESA IMIHIGO TRIM3

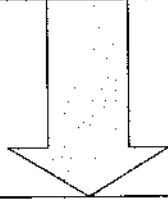
N°	UMURENGE	AMANOTA WAGIZE /100
01	CYANZARWE	84,6
02	NYAKILIBA	83
03	RUGERERO	82,7
04	NYUNDO	82,6
05	GISENYI	77,8
06	BUGESHI	76,2
07	RUBAVU	76,2
08	KANAMA	76
09	KANZENZE	76
10	NYAMYUMBA	73,4
11	BUSASAMANA	72,8
12	MUDENDE	64

GUSHIMIRA



UBUYOBOZI BW'AKARERE KA RUBAVU BURASHIMIRA INZEGO ZOSE ZA LETA, ABIKORERA(PRIVATE SECTOR), IMIRYANGO N'IMISHINGA ITANDUKANYE (NGO's) BAGIZE URUHARE KUGIRANGO IBI BIKORWA BIGERWEHO.

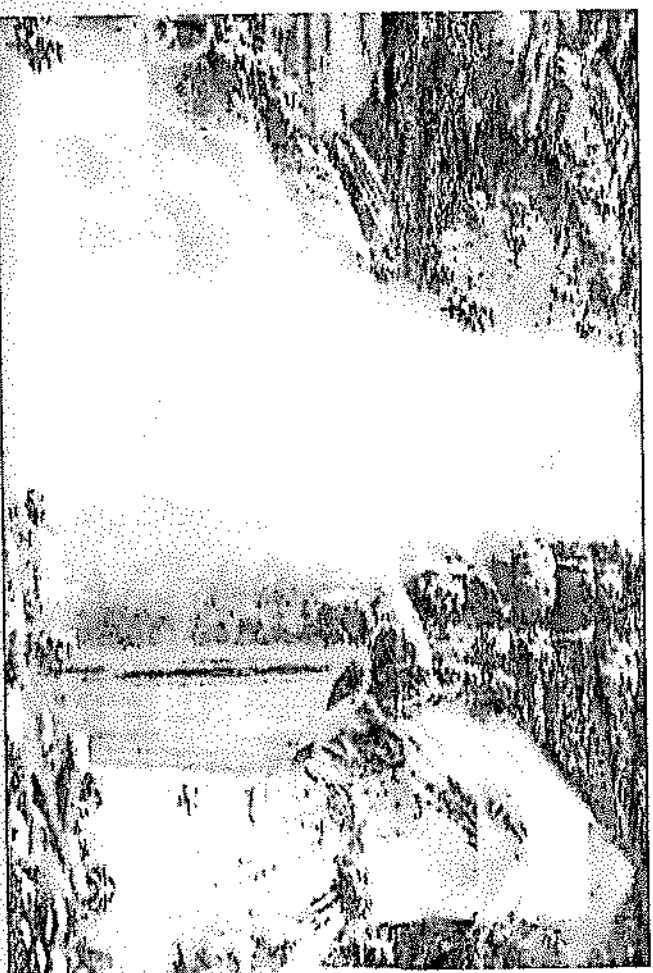
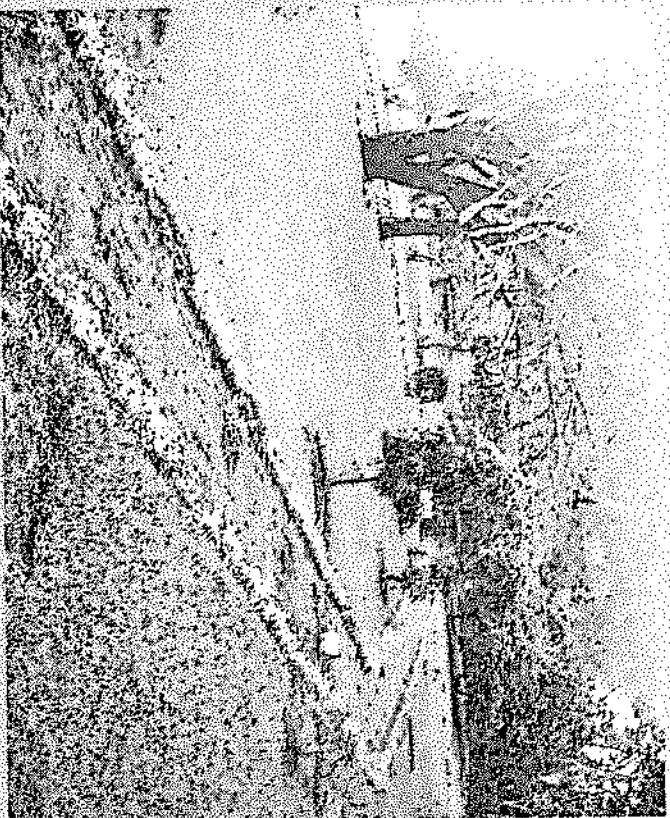
INZITIZI Z'INGENZI ZAGARAGAYE



**ABATERANKUNGA BAGENDA BISUBIRAHO
(PADEBL,PPMER)**

NGWINO UREBE

MURAKOZE



**AKARERE KA RUBAVU
MUGIRE AMAHORU
Y'IMANA**